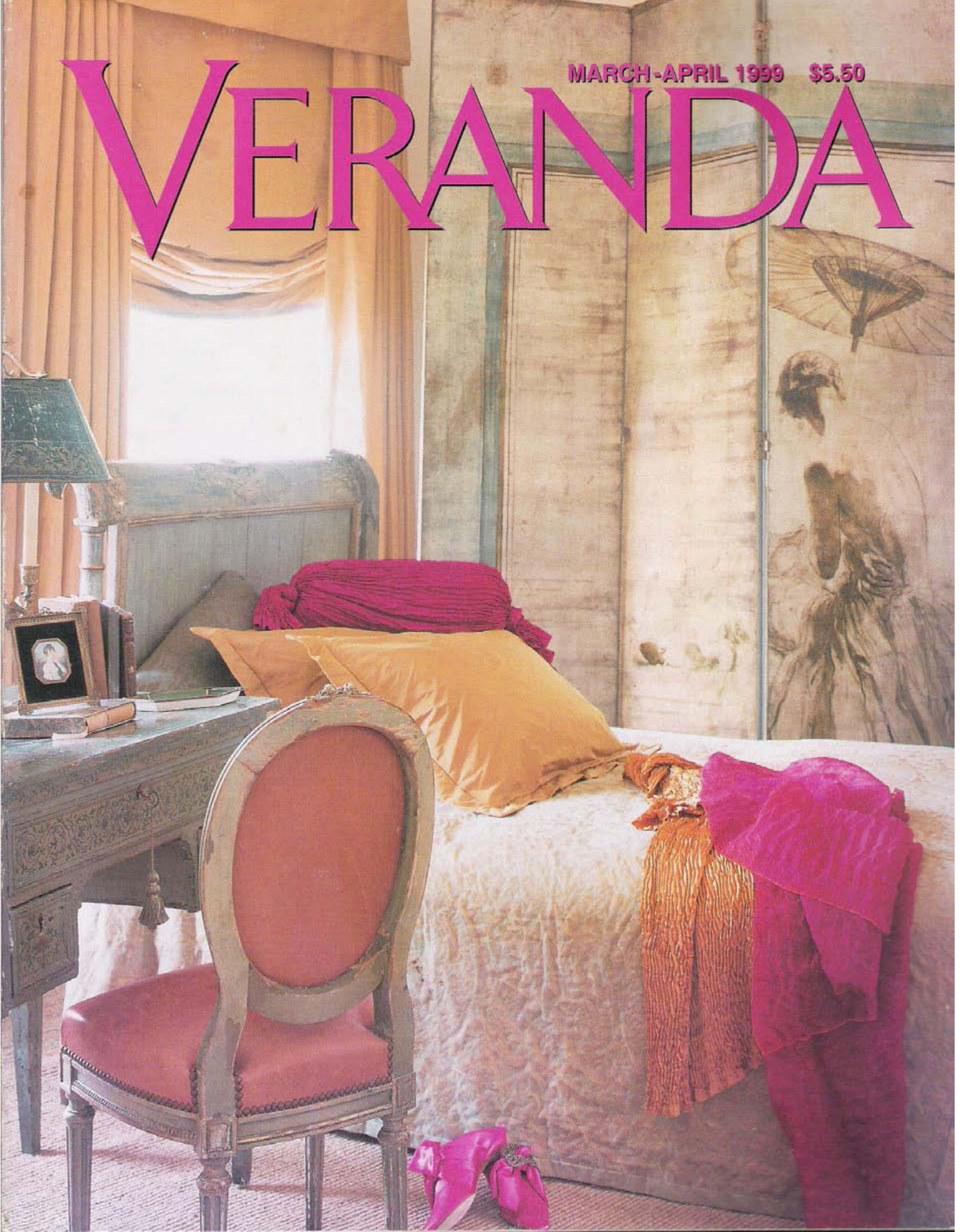


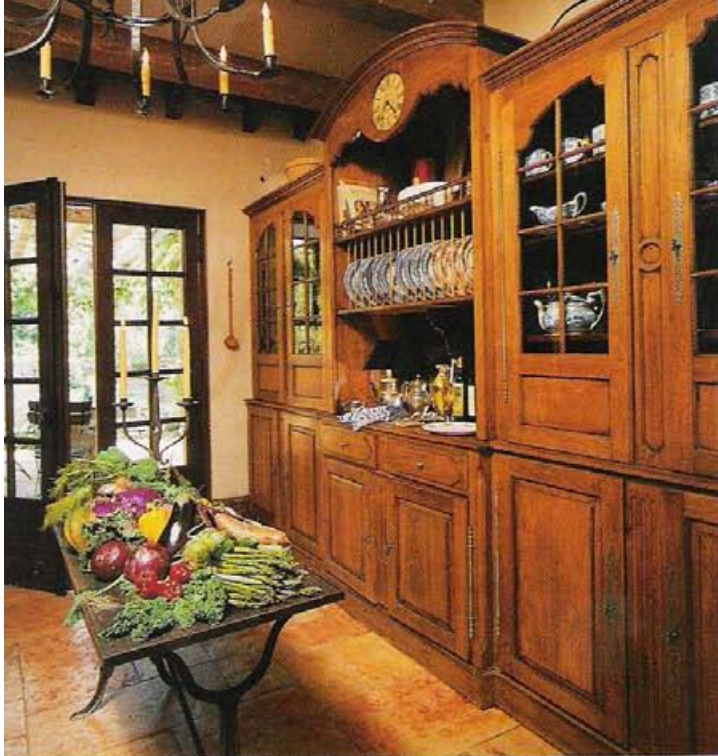
MARCH-APRIL 1999 \$5.50

VERANDA







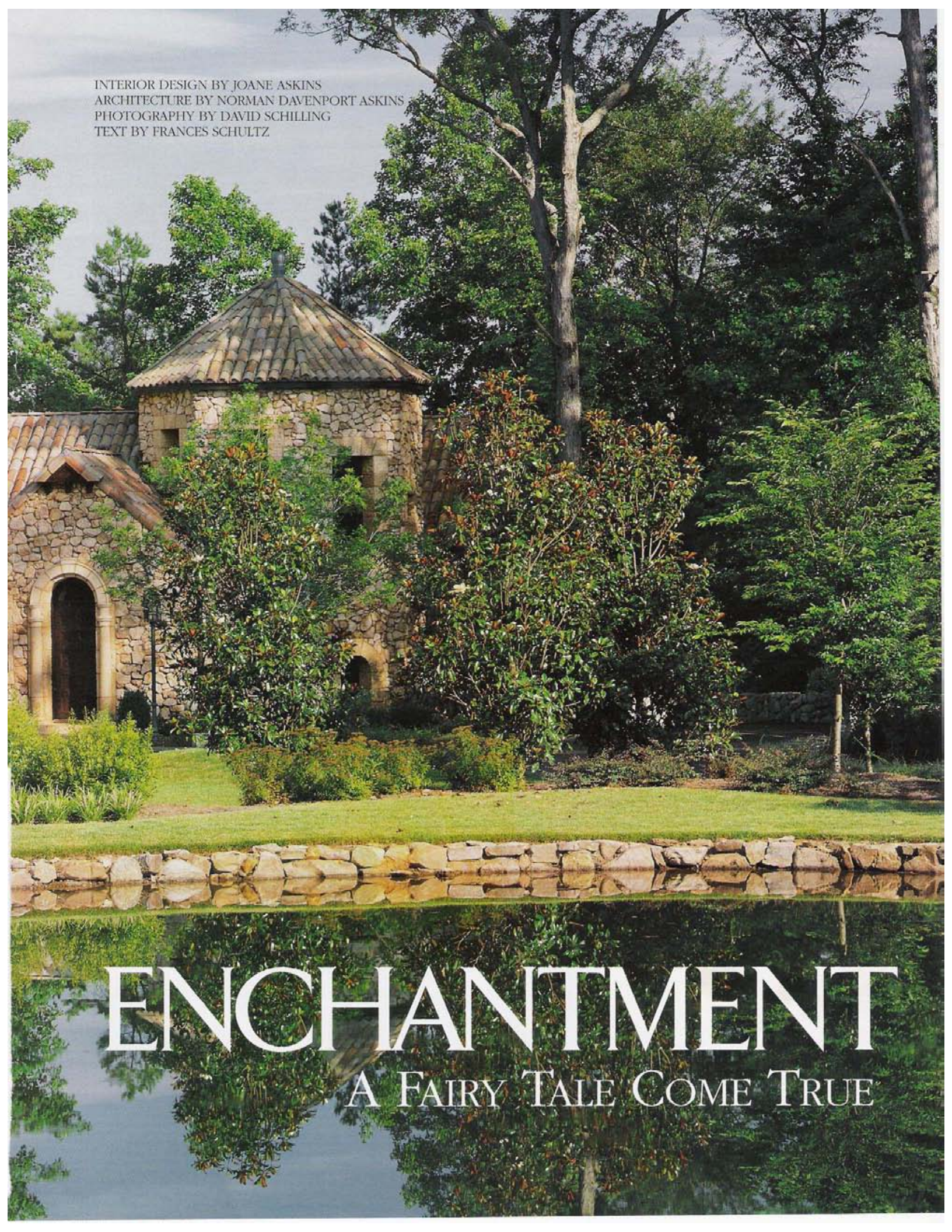


OPPOSITE, TOP: A thoroughly unmodern kitchen barely concedes to the 20th century with a 1930s refrigerator. Large cupboard made of old wood. OPPOSITE, BOTTOM: Vine-entwined arbor shades the alfresco dining terrace graced with stone table and old French park chairs.







A photograph of a stone building with a tiled roof and arched windows, surrounded by lush greenery and a pond. The building is constructed from light-colored stone and features a prominent arched window on the left. The roof is covered in dark, weathered tiles. The building is set in a lush, green landscape with various trees and shrubs. In the foreground, a stone wall borders a pond, which reflects the building and the surrounding foliage. The overall scene is peaceful and idyllic, evoking a sense of a fairy tale setting.

INTERIOR DESIGN BY JOANE ASKINS
ARCHITECTURE BY NORMAN DAVENPORT ASKINS
PHOTOGRAPHY BY DAVID SCHILLING
TEXT BY FRANCES SCHULTZ

ENCHANTMENT

A FAIRY TALE COME TRUE